

Description

The Innoflex Auto Lubrication System is a battery-operated lubrication system used when an autarchic operation is desired or necessary. The highly-efficient battery pack can optionally be set to empty the lubricant cartridge over a period of 1-36 months. The Innoflex Auto Lubrication System offers a new portal to the world of automatic lubrication. With the highly versatile Lubricus lubrication system, both single lubrication points and a whole group of varied points can be provided with lubricant continuously over a long period of time. Due to the compact dimensions, the Innoflex is optimally suited for upgrades or retrofitting. The large variety of models enable an individually optimised lubrication solution for almost every application.

Benefits

- Transport of oil and grease up to NLGI class 2
- Connection to machinery control possible
- Delivery pressure up to 70 bar (1015 psi)
- Fault/empty reporting
- Operating temperature range -15 °C to +70 °C
- Temperature-independent feed rate
- Visual inspection is possible at any time
- Running time, pause time, pulse mode
- Optical warning in the case of malfunction
- Fault/empty reporting
- Temperature-independent feed rate
- Special fillings available

Directions for use

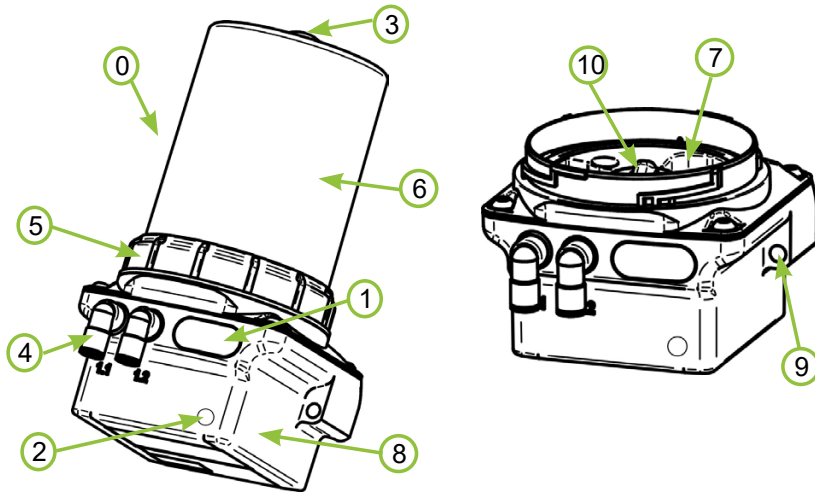
Drive:	Electromechanical
Operating pressure:	1- 36 month, pause time, pulse mode
Lubricant volume:	250 ml / 400 ml
Operating temp.:	-15 °C to +70 °C
Operational voltage:	Li-Battery or 24 VDC
Lubricating medium:	Oils and greases up to NLGI 2
Filling:	Standard filling/special filling
Weight without lubricant:	1027 - 1456 g (250 ml) 1041 - 1470 g (400 ml)
Weight with lubricant:	Ca. 130
Dimensions:	(Wx H x D) 112 x 165 x 94 mm (250 ml) 112 x 196 x 94 mm (400 ml)
Performance monitoring:	OLED-Display
Outlet:	Hose 6/4 mm



PLEASE FIND THE USER MANUAL ON THE FOLLOWING PAGES

USER MANUAL

1. Product details



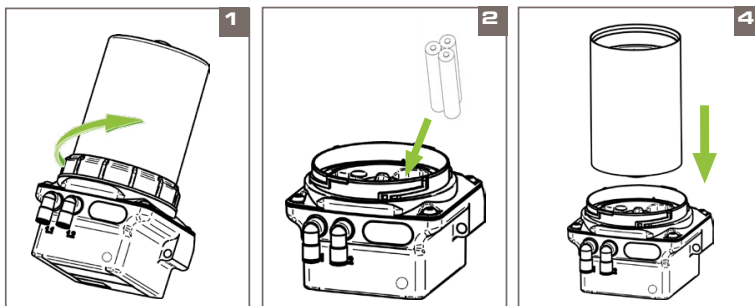
No. Description

- 0. INNOFLEX
- 1. LCD
- 2. Action area (for actions with the activation and programming key)
- 3. Activation and programming key
- 4. Lubricant outlet, outlets (different versions possible)
- 5. Retaining ring
- 6. Housing (different versions possible)
- 7. Battery compartment
- 8. Nameplate with designation, CE mark and serial number
- 9. Through hole for assembly
- 10. Lubricant inlet with thread for cartridge

2. Technical Data

Housing	
Mounting options	holes for screw M6
Mounting position	upright
Operating temperature	Alcaline battery: +15 ... +60 °C Lithium battery: +15 ... +60
Lubricant and hydraulics	
Lubricant outlets	1 / 2
Max. Pressure	70 bar / 1015 psi (-10%/+15%)
Steady state pressure	50 bar / 725 psi
Grease delivery	Per stroke 0.15 ml
Operating voltage	6 V
Protection class	IP 54

3. LCD & key assignment



1. Separate the housing from the power unit by turning the retaining ring counterclockwise.
2. Connect the battery to the battery cable using the plug.
3. Turn the cap on the lubricant cartridge counterclockwise and pull it off.
4. Place the full lubricant cartridge on the device (label facing front). Turn the lubricant cartridge clockwise onto the device.
5. Place the dismantled housing on Innoflex. Fasten the housing to the power unit by turning the retaining ring clockwise.

4. Commissioning

1. Mechanical fastening

Fix Innoflex mechanically. Pay particular attention to the maximum tight-ening torques permissible!

2. Power on

3. Execute FIL function

4. Hydraulic connection

Connect the consumer hydraulically to Innoflex. If you connect tubes make sure that tubes and connectors are installed tightly, cleanly and correctly.

The tube length shall not exceed 5 meters, the inner tube diameter shall not be lower than 4 mm.

ⓘ Ideally, use tubes prefilled with the appropriate lubricant.

5. Check settings on Innoflex

Check the required values for the lubrication point at the factory settings of the device and adjust them if necessary. Factory settings: operating mode=hour mode.

5. Operation and settings

Two operating modes can be selected.

The hour mode -h- allows setting the number of cycles (c) within a dispensing time (h) in hours. The cycles are evenly distributed over the dispensing time. Dispensing times between 1...240 hour(s) and cycles between 1...30 can be set.

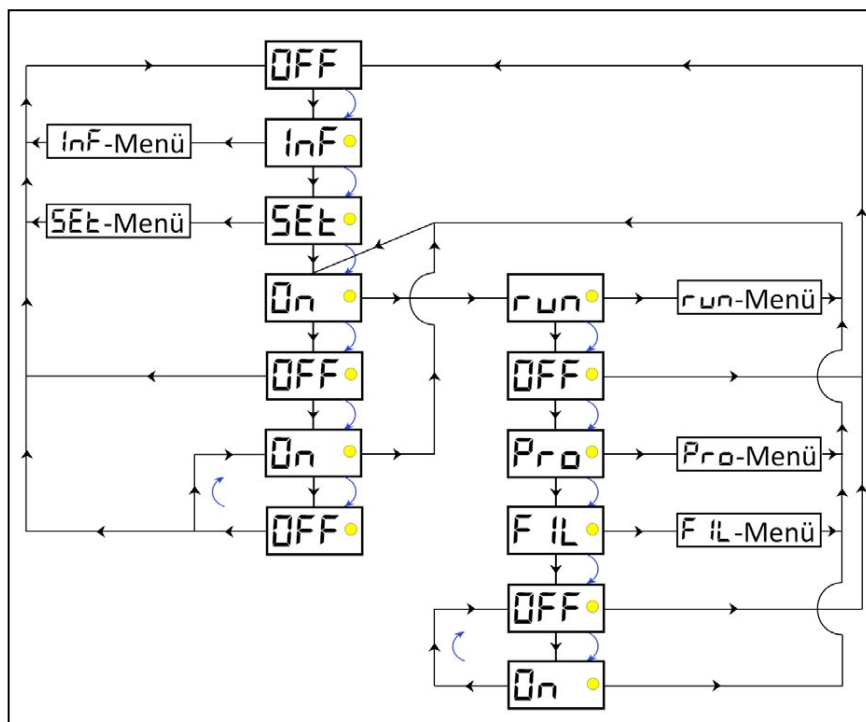
The empty time mode Et allows the emptying time of the cartridge to be set in months. Emptying times between 1...36 month(s) can be set.

5.1 Default settings operating mode hour mode -h-

Dispensing time h = 3 The dispensing time is 3 hours.

Number of cycles c = 1 The number of cycles is one (1) stroke during the dispensing time.

5.2 Menu and LCD messages



The graphic above illustrates the unchangeable basic flowchart of the Innoflex menu navigation as well as the options for branching to submenus.

- ① Innoflex can be switched on and off at several points in the menu navigation.
- ① The INF menu provides you with an informative overview of the current Innoflex settings.
- ① The SET menu allows you to make changes to the operating mode.
- ① The RUN menu allows you to manually trigger a single dispense at Innoflex.
- ① The PRO menu allows you to make changes to the Innoflex settings - and thus to its dispensing behavior.
- ① The FIL menu allows you to manually trigger a fixed number of dispenses at Innoflex.

Display in LCD	Meaning
Errors	
E1	Error E1 (empty cartridge)
E2	Error E2 (overload / overpressure)
E3	Error E3 (battery empty)
E4	Error E4 (fatal error)
Submenus	
INF	INF menu
n01	Firmware version of the device
h03	Currently set value of dispensing time h
c01	Currently set value of number of strokes c
6	Currently set value of emptying time Et
SET	SET menu
-h-	Operating mode: hour mode
Et	Operating mode: empty time mode
RUN	RUN menu
01...70	During the manually triggered active RUN command („quick check“/extra dispense), the LCD displays the approximate back pressure in bar. In addition, the green LED lights up.
PRO	PRO menu
h1...240	Adjustable setting of dispensing time h
c1...30	Adjustable setting of number of strokes c
01...36	Adjustable setting of emptying time Et
FIL	FIL menu
01...70	During the manually triggered active FIL command, the LCD displays the approximate back pressure in bar. In addition, the green LED lights up.
Clr	If the process is aborted during the FIL command, Clr appears at first.

Display in LCD	Meaning
Additional characters on the LCD	
1 / 2	During a dispensing process Innoflex indicates from which outlet lubricant is being pumped.
MAX	After each cycle the maximum back pressure is displayed in bar.

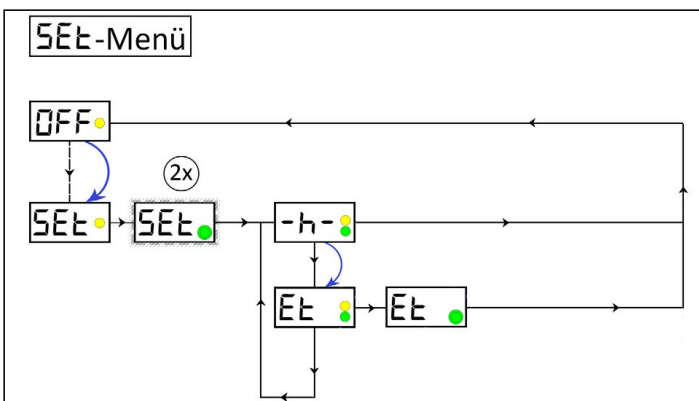
5.3 Actions with the activation and programming key



1. Turn the activation and programming key to the OPEN position and remove it from the housing of Innoflex.
2. Place the key on the action area on the front of the device.
3. Remove the key from the action area as long as the desired menu item is displayed in the LCD.

5.4 SET menu

The SET menu allows you to change the operating mode of the device. You can switch between **hour mode -h-** and **empty time mode -Et-**.



-h- Operating mode: hour mode -h-
Et Operating mode: empty time mode Et

If you would like to change the operating mode, move the activation and programming key back to the action area. When your desired operating mode is displayed on the LCD, remove the activation and programming key from the action area.

5.5 PRO menu

Being in operating mode hour mode -h-, you can change the dispensing time h as well as the number of cycles c (number of strokes).

Being in PRO menu the first step is to set the dispensing time h and afterwards the number of cycles c; direct access to the number of cycles c is not possible.

Being in empty time mode Et, you can change the emptying time Et in months.

5.6 FIL menu

This function enables you to prefill connected accessories (tubes, distributors,...) with the lubricant contained in the lubricant cartridge, especially during the initial start-up of the device. However, the process can also be aborted manually at any time.

6. Maintenance

NOTICE

It is not possible to refill empty or opened lubricant cartridges.
--

NOTICE

The battery of Innoflex must be replaced at the same time as the lubricant cartridge.
