

# Kraftform Kompakt 70 Universal, 32 pieces

## Kraftform Kompakt 70 and 71



<b>EAN:</b>	4013288228345	<b>Size:</b>	170x80x50 mm
<b>Part number:</b>	05057113001	<b>Weight:</b>	408 g
<b>Article number:</b>	Kraftform Kompakt 70 Universal	<b>Country of origin:</b>	CZ
		<b>Customs tariff number:</b>	82079030

- 32-piece set
- Strong permanent magnet
- Rapidaptor quick-release chuck allows rapid bit change
- Tough viscous bits for universal use
- Assortment in robust textile box with low weight for easy transport
- Suitable for docking with the Wera 2go system

32-piece set with 816 R Kraftform bitholding screwdriver with Rapidaptor quick-release chuck and multi-component Kraftform handle for fatigue-free working. Rapidaptor universal holder with strong permanent magnet, which even holds big and heavy screws. Throw in the 30 bits and the user is equipped for almost every application. In a robust textile box; suitable for Wera 2go.

### Web link

[https://products.wera.de/en/kraftform\\_kompakt\\_kraftform\\_kompakt\\_70\\_and\\_71\\_kraftform\\_kompakt\\_70\\_universal.html](https://products.wera.de/en/kraftform_kompakt_kraftform_kompakt_70_and_71_kraftform_kompakt_70_universal.html)

Wera - Kraftform Kompakt 70 Universal  
05057113001 - 4013288228345

Wera Werkzeuge GmbH  
Korzter Straße 21-25  
D-42349 Wuppertal  
Tel: +49 (0)2 02 / 40 45-0  
E-Mail: [info@wera.de](mailto:info@wera.de)

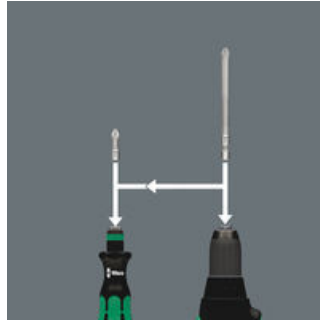
## Kraftform Kompakt 70 and 71

### Handle/interchangeable blade system



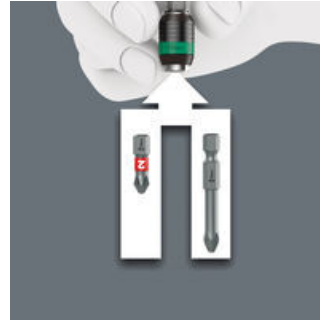
The handle/interchangeable blade system allows rapid exchange of the blades required for a wide range of applications.

### Manual and power tool operations



The sets come with a Kraftform handle, quick-release chuck and bits for manual and power tool operations.

### Chuck-all



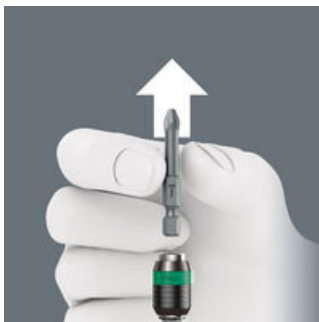
The Rapidaptor quick-release chucks hold 1/4" DIN ISO 1173-C 6,3 and E 6,3 as well as Wera series 1 and 4 bits.

### Rapid-in and self-lock



The bit can be pushed into the adaptor without moving the sleeve. The lock is activated automatically as soon as the bit is applied to the screw. Bits are held securely and wobble-free.

### Rapid-out



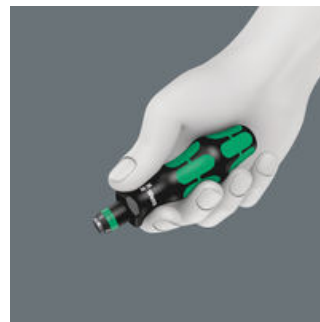
Simply push the sleeve forward to change the bit. The spring mechanism lifts the bit off the magnet and unlocks the tool. The bit can be easily removed. The rapid-out function makes it easy to remove even the smallest bits without extra tools.

### Kraftform



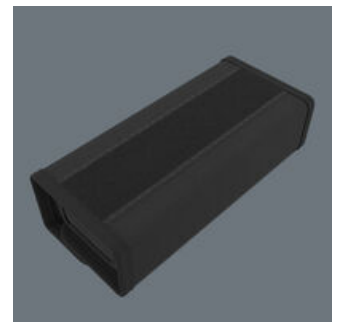
The basic idea for the prototype of the Kraftform handle - that the hand should dictate the design - has, right through to today, proved to be correct. In cooperation with the internationally recognised Fraunhofer IAO Institute, Wera developed a screwdriver handle designed to match the shape of the human hand as long ago as the 1960s. After a long development phase, the Wera Kraftform handle was launched to the market in 1968. It has been optimised through the years with new technologies, but has kept its proven shape. After all, the human hand has not changed either.

### Prevents hand injuries



The outstanding design of the Kraftform handle that fits perfectly into the hand prevents hand injuries such as blisters and calluses.

### Textile box



Robust textile box that keeps the tools safe during transport and always close at hand. The textile box is suitable for attachment to the wall or shelf thanks to the hook and loop fastener strips on the back.

### Web link

[https://products.wera.de/en/kraftform\\_kompakt\\_kraftform\\_kompakt\\_70\\_and\\_71\\_kraftform\\_kompakt\\_70\\_universal.html](https://products.wera.de/en/kraftform_kompakt_kraftform_kompakt_70_and_71_kraftform_kompakt_70_universal.html)

Wera - Kraftform Kompakt 70 Universal  
05057113001 - 4013288228345

Wera Werkzeuge GmbH  
Korzter Straße 21-25  
D-42349 Wuppertal  
Tel: +49 (0)2 02 / 40 45-0  
E-Mail: [info@wera.de](mailto:info@wera.de)

# Kraftform Kompakt 70 Universal, 32 pieces

## Kraftform Kompakt 70 and 71

### Set contents:

#### 816 R Bitholding screwdriver with Rapidaptor quick-release chuck, 1/4" x 119 mm



05051462001 1x 1/4" x 119 mm



#### 889/4/1 K Rapidaptor Universal Bit Holder, 1/4" x 50 mm



05052502001 1x 1/4" x 50 mm



#### 851/1 TZ bits, PH 1 x 25 mm



05056505001 3x PH 1 x 25 mm

05056510001 3x PH 2 x 25 mm

05056525001 3x PH 3 x 25 mm



#### 855/1 TZ bits, PZ 1 x 25 mm



05056810001 3x PZ 1 x 25 mm

05056815001 3x PZ 2 x 25 mm

05056825001 3x PZ 3 x 25 mm



#### 867/1 Z TORX® B0 bits with bore hole, TX 10 x 25 mm



05066500001 1x TX 10 x 25 mm

05066505001 1x TX 15 x 25 mm

05066510001 1x TX 20 x 25 mm

05066515001 1x TX 25 x 25 mm

05066525001 1x TX 30 x 25 mm

05066530001 1x TX 40 x 25 mm



#### 840/1 Z bits, 4 x 25 mm



05056320001 1x 4 x 25 mm

05056325001 1x 5 x 25 mm

05056330001 1x 6 x 25 mm



#### 800/1 TZ bits, 0.6 x 4.5 x 25 mm



05056210001 1x 0.6 x 4.5 x 25 mm

05056225001 1x 1 x 5.5 x 25 mm

05056233001 1x 1.2 x 6.5 x 25 mm



#### 9478 Kraftform Kompakt 70/71 Textile box, empty, 160 x 95 x 65 mm

1x 160 x 95 x 65 mm



### Web link

[https://products.wera.de/en/kraftform\\_kompakt\\_kraftform\\_kompakt\\_70\\_and\\_71\\_kraftform\\_kompakt\\_70\\_universal.html](https://products.wera.de/en/kraftform_kompakt_kraftform_kompakt_70_and_71_kraftform_kompakt_70_universal.html)

Wera - Kraftform Kompakt 70 Universal  
05057113001 - 4013288228345

Wera Werkzeuge GmbH  
Korzter Straße 21-25  
D-42349 Wuppertal  
Tel: +49 (0)2 02 / 40 45-0  
E-Mail: [info@wera.de](mailto:info@wera.de)

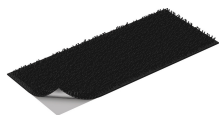
Kraftform Kompakt 70 Universal, 32 pieces

Kraftform Kompakt 70 and 71



Hook and Loop Fastener Strip 120, 120 x 50 mm

1x 120 x 50 mm



**Web link**

[https://products.wera.de/en/kraftform\\_kompakt\\_kraftform\\_kompakt\\_70\\_and\\_71\\_kraftform\\_kompakt\\_70\\_universal.html](https://products.wera.de/en/kraftform_kompakt_kraftform_kompakt_70_and_71_kraftform_kompakt_70_universal.html)

Wera - Kraftform Kompakt 70 Universal  
05057113001 - 4013288228345

Wera Werkzeuge GmbH  
Korzter Straße 21-25  
D-42349 Wuppertal  
Tel: +49 (0)2 02 / 40 45-0  
E-Mail: [info@wera.de](mailto:info@wera.de)