

# Wera 2go SHK 1 Tool set for plumbing, heating and air conditioning, 36 pieces

Wera 2go



<b>EAN:</b>	4013288230300	<b>Size:</b>	370x345x140 mm
<b>Part number:</b>	05136071001	<b>Weight:</b>	8000 g
<b>Article number:</b>	Wera 2go SHK 1	<b>Country of origin:</b>	CZ
		<b>Customs tariff number:</b>	82060000

- Extensive 30-piece tool set in the compact Wera 2go 2 tool container for mobile HVAC applications
- Premium brand tools by Wera, BESSEY®, KNIPEX®, Lyra®, PICARD®, PUK® and Stabila®
- Joker 6002 double spanner with practical holding function by a metal plate in the open end
- With chiseldriver for screwdriving, chiselling, mortising as well as 4 VDE screwdrivers - 2 of which with stainless steel blade to prevent extraneous rust
- 1/2" Zyklop Metal 8004 C ratchet (72 teeth, 5° low return angle) with reversing lever; slim design for very narrow spaces
- L-key set for hexagonal socket screws; the Hex-Plus profile reduces the cylindrical turning of hexagonal socket screws

Compact tool set with the most important tools for HVAC services with products by Wera, BESSEY®, KNIPEX®, Lyra®, PICARD®, PUK® and Stabila®. Mobility is made considerably easier thanks to the compact tool container from the Wera 2go system.

## Web link

[https://products.wera.de/en/wera\\_2go\\_wera\\_2go\\_shk\\_1.html](https://products.wera.de/en/wera_2go_wera_2go_shk_1.html)

Wera - Wera 2go SHK 1  
05136071001 - 4013288230300



Wera Werkzeuge GmbH  
Korzter Straße 21-25  
D-42349 Wuppertal  
Tel: +49 (0)2 02 / 40 45-0  
E-Mail: info@wera.de

Wera 2go

Wera 2go SHK 1



Extensive 30-piece tool set in the compact Wera 2go 2 tool container for mobile HVAC applications.

Double open-ended wrench



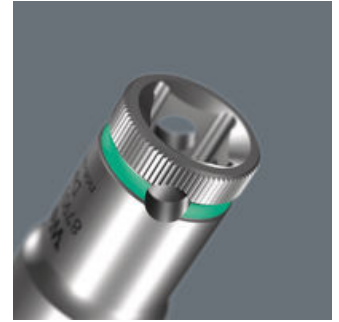
The Joker double open-ended wrench is ideally suited for locking down nuts and bolts.

Zyklop Metal Switch



Forged, full metal ratchet (chrome-molybdenum) that is extremely robust with a long service life; slim design to enable work in very confined spaces.

Zyklop socket wrench inserts



Manual and machine sockets (ISO 2725-part 3) for manual and machine use. With "Take it easy" Tool finder with colour coding by size - for quick and easy identification of the required tool. Slip-proof for easy grip even with oily hands. With ball stop groove. For external hexagon screws and bolts. Made of dull-chromed chrome-vanadium.

Series 900 – the Chiseldriver



The chiseldriver is the solution for jobs that require more than just screwdriving. For fastening, chiselling and loosening seized screws or hose clamps. With an integrated impact cap that extends service life and reduces the risk of splintering. With a pound-thru hexagon blade made from high-grade material for - zero-loss transfer of high forces when struck with a hammer. The tough viscous tempered material prevents the blade from splintering or breaking. More TORQUE can be transferred by attaching an open-jawed or ring spanner to the integrated hexagon bolster.

Hex-Plus



Hexagon screws can endure a problem because the contact surfaces delivering the power from the conventional tool, is transferred to the screw via very small surface areas. The consequence: the screw can become damaged (rounding out). Hex-Plus tools have a greater contact surface that prevents this from happening! At the same time, as much as 20 % more torque can be applied. Good to know: Hex-Plus tools fit into every standard hexagon socket screw!

Web link

[https://products.wera.de/en/wera\\_2go\\_wera\\_2go\\_shk\\_1.html](https://products.wera.de/en/wera_2go_wera_2go_shk_1.html)

Wera - Wera 2go SHK 1  
05136071001 - 4013288230300

Wera Werkzeuge GmbH  
Korzter Straße 21-25  
D-42349 Wuppertal  
Tel: +49 (0)2 02 / 40 45-0  
E-Mail: [info@wera.de](mailto:info@wera.de)

# Wera 2go SHK 1 Tool set for plumbing, heating and air conditioning, 36 pieces



Wera 2go

Set contents:

## Wera 2go 2 Tool Container, 3 pieces

05004351001 1x 3 pieces



## 932 A Screwdriver for slotted screws, 1.2 x 7 x 125 mm



05018266001 1x 1.2 x 7 x 125 mm



## 395 HO Nutdriver, 10 x 90 mm



05029465001 1x 10 x 90 mm

05029466001 1x 13 x 90 mm



## 1060 i VDE-insulated Kraftform slotted screwdriver, 0.6 x 3.5 x 100 mm



05051582001 1x 0.6 x 3.5 x 100 mm

05051587001 1x 1 x 5.5 x 125 mm



## 1062 i PH VDE-insulated Kraftform Phillips-head screwdriver, PH 1 x 80 mm



05051601001 1x PH 1 x 80 mm

05051603001 1x PH 2 x 100 mm



## 8004 C Zyklop Metal Ratchet with switch lever and 1/2" drive, 1/2" x 281 mm



05004064001 1x 1/2" x 281 mm



## 8790 HMC Zyklop socket with 1/2" drive, 10 x 37 mm



05003601001 1x 10 x 37 mm

05003604001 1x 13 x 37 mm

05003608001 1x 17 x 37 mm

05003610001 1x 19 x 37 mm



### Web link

[https://products.wera.de/en/wera\\_2go\\_wera\\_2go\\_shk\\_1.html](https://products.wera.de/en/wera_2go_wera_2go_shk_1.html)

Wera - Wera 2go SHK 1  
05136071001 - 4013288230300

Wera Werkzeuge GmbH  
Korzter Straße 21-25  
D-42349 Wuppertal  
Tel: +49 (0)2 02 / 40 45-0  
E-Mail: [info@wera.de](mailto:info@wera.de)

# Wera 2go SHK 1 Tool set for plumbing, heating and air conditioning, 36 pieces



Wera 2go

Belt C (textile belt), 6 location, unloaded, 45 x 275 mm

1x 45 x 275 mm



6002 Joker Double Open end wrenches, 10 x 13 x 167 mm



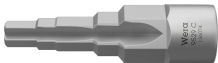
05003760001	1x	10 x 13 x 167 mm
05003765001	1x	17 x 19 x 235 mm
05020262001	1x	24 x 27 x 280 mm
05020264001	1x	30 x 32 x 305 mm

950/9 Hex-Plus 2 L-key set, metric, chrome-plated, 9 pieces



05021909001 1x 9 pieces

9529 C SB 1/2" Step wrench, 88 mm



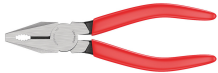
05136074001 1x 88 mm

KNIPEX® Water pump pliers COBRA® 250mm 87 11 250



1x KNIPEX® Water pump pliers COBRA® 250mm 87 11 250

KNIPEX® Combination pliers 160mm 03 01 160



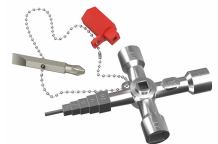
1x KNIPEX® Combination pliers 160mm 03 01 160

KNIPEX® Diagonal insulation stripper 14 26 160



1x KNIPEX® Diagonal insulation stripper 14 26 160

KNIPEX 001104 Pro wrench for standard shut-off systems



1x KNIPEX 001104 Pro wrench for standard shut-off systems

STABILA® Spirit level type 70, 30 cm, 02281



1x STABILA® Spirit level type 70, 30 cm, 02281

Web link

[https://products.wera.de/en/wera\\_2go\\_wera\\_2go\\_shk\\_1.html](https://products.wera.de/en/wera_2go_wera_2go_shk_1.html)

Wera - Wera 2go SHK 1  
05136071001 - 4013288230300

Wera Werkzeuge GmbH  
Korzter Straße 21-25  
D-42349 Wuppertal  
Tel: +49 (0)2 02 / 40 45-0  
E-Mail: [info@wera.de](mailto:info@wera.de)

## Wera 2go SHK 1 Tool set for plumbing, heating and air conditioning, 36 pieces



Wera 2go

**STABILA® Wooden folding rule type 607, 2 m, yellow, 01104**

1x STABILA® Wooden folding rule type 607, 2 m, yellow, 01104



**PICARD® Fitter's hammer 400 g, German shape, 000101-0400**

1x PICARD® Fitter's hammer 400 g, German shape, 000101-0400



**PUK® 2200 Hand saw frame**

1x PUK® 2200 Hand saw frame



**BESSEY® blades DBKPH-EU flick knife**

1x BESSEY® blades DBKPH-EU flick knife



**Lyra® Construction marker DRY PROFI 4494202**

1x Lyra® Construction marker DRY PROFI 4494202



Web link

[https://products.wera.de/en/wera\\_2go\\_wera\\_2go\\_shk\\_1.html](https://products.wera.de/en/wera_2go_wera_2go_shk_1.html)

Wera - Wera 2go SHK 1  
05136071001 - 4013288230300

Wera Werkzeuge GmbH  
Korzter Straße 21-25  
D-42349 Wuppertal  
Tel: +49 (0)2 02 / 40 45-0  
E-Mail: [info@wera.de](mailto:info@wera.de)